

## F3 Smart Watch Bracelet User Manual

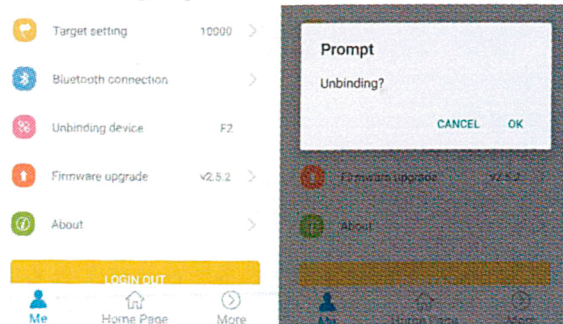


### F3 Needs Attention

To ensure the data connection smoothly, a watch only match one Fundo Bracelet account, they bind together when user first time setup, if necessary to change a cellphone or Fundo Bracelet App account, you have to unbind the watch and the cellphone first.

#### 1. Android user unbind the watch

Open the Fundo Bracelet App when the watch connected with cellphone, Open app on cellphone, tap "unbind device", then tap ok, then unbind device success, after that the watch Bluetooth icon will blink, means it is done. If you want use same cellphone connects another watch, you have logout the account and login again.



#### 2. iPhone unbind the watch.

Open the Fundo Bracelet App when the watch connected with cellphone, Open app on cellphone, tap "unbind device", then tap ok, then unbind device success, and one more step go to the iPhone setting-Bluetooth, discount the watch, after that the watch Bluetooth icon will blink, means it is done. If you want use same cellphone connects another watch, you have logout the account and login again.

1

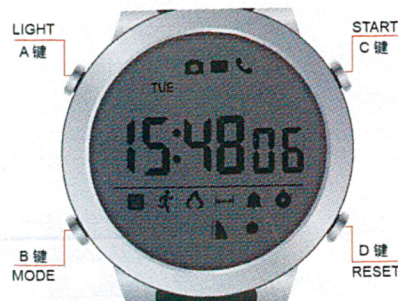
Thank you for choosing our product!

To have a comprehensive understanding and using this device, to know all the features and simple operation method, please read this manual first.

This equipment is mainly matching with smart phone via bluetooth connection .firstly you need to download the "FundoBracelet" APP in your cell phone, and then connect the bluetooth of the watch and the cell phone .once the connection is successful, you can sync the date and time in the phone, also you can sync the data in the watch into the APP in the cell phone. The detail of the bluetooth connection please refer the below point 4.

Our company reserve the right of modify the content of the manual without prior notice.

#### 1. Functional Buttons



#### 2. Power on/off

Power on:  
Press button B & C together for 3 seconds

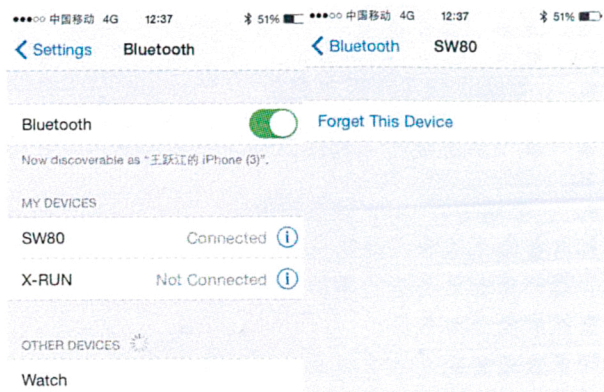
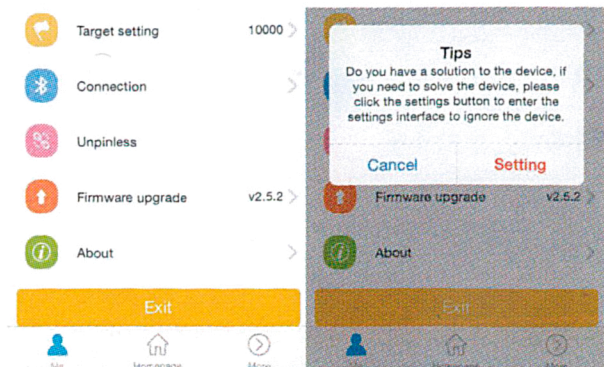
Power off:  
Press button B & C together for 3 seconds



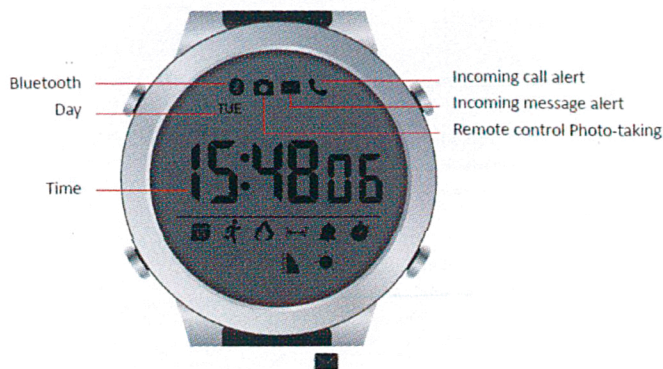
#### 3. Functional Modes

3

2







#### Incoming message alert

Connect the watch and the mobile phone via Bluetooth and enable notification in the "More" section of the App. When the mobile phone receives incoming message, the notification will be pushed to the watch, with beep sound and blinking icon.

#### Incoming call alert

Connect the watch and the mobile phone via Bluetooth and enable notification in the "More" section of the App. When the mobile phone receives incoming call, the notification will be pushed to the watch, with beep sound and blinking icon.

#### Remote control photo-taking

Connect the watch and the mobile phone via Bluetooth, open the mobile phone camera through the "more" section in the App. Press button B & C (MODE+START button) together shortly for remote control photo-taking.

Manual time setting: Under time display mode, press and hold button D for 3 seconds to enter time setting, then press button A and C to adjust time. Short press on button D to switch. Short Press button B to save the setting and exit.

**Display backlight:** Press button A under any mode to light up EL backlight for 3 seconds.(frequent use of backlight ,will increase the consumption of electricity)

4

#### Calorie consumption display mode:



#### Stopwatch mode:

After entering stopwatch mode, press button C to start or pause stopwatch.

Data reset: short press button D to reset the data when in pause status.



#### Walking distance display mode:

Under walking distance display mode, press button C can switch between KM and Mile (default as KM)



#### Barometric pressure and altitude display mode:

Press button C to switch between Pa and Meter display (default as Pa)

6

Press button B to switch modes,the sequence of the modes is as follows: 1. Date display mode; 2. Pedometer display mode; 3. Calorie consumption display and Walking distance display mode; 4. Alarm display mode; 5.Stopwatch mode; 6. Barometric pressure display mode; 7. Ultraviolet index display mode.

#### Display mode:

Under date display mode, long press and hold button D for 3 seconds to enter date setting, and short press button A and C to adjust digits. Short press A to subtract "1", short press C to plus "1",Short press button D to switch and press button B to exit date setting.

#### Alarm display mode:

Long press button D for 3 seconds to set alarm time, then press button D once.Short press A to subtract "1", Long press A to subtract fast,then short press button D to Switch.Short press button C to plus "1", Long press C to plus fast ,then short press button D to Switch . After finish setting ,short press button B to save settings and Exit. When alarm clock time, the blinking alarm icon and beep sound will remind the user. Press any button to stop alarm.

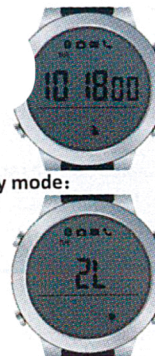


#### Pedometer display mode:



5

#### Ultraviolet index display mode:



#### 4. Turn on/off Bluetooth Connection

Long press button A for 3 seconds , the Bluetooth connection icon blinks, that means the watch's Bluetooth is turned on and is ready. If the icon is always on, that means Bluetooth connection is OK. If Bluetooth between the mobile phone and the watch disconnects and fails to connect again in 30 minutes, the watch's Bluetooth will be turned off automatically. To turn on Bluetooth again, press and hold button A for 3 seconds.

#### 5. Use of APP

1. Download in App Stores : Android System : Search "FundoBracelet"and download from Google Play app store; iOS System: Search "FundoBracelet"and download from Apple Store;
2. Scan the app's two-dimension code to download:



7

3. Android system: use QQ, Wechat or other Apps to scan the code, link to the interface to download  
 IOS system: use QQ, Wechat or other Apps to scan the code, link to Appstore to download  
 Android phone App Name: "Fundo Bracelet"  
 Apple phone App Name: "Fundo Bracelet"



After the installation is complete, icon as shown in figure:

#### 6. FundoBracelet Account Log in:

On the "Me" interface, click "Login" through "Visitors login" or third-party accounts such as QQ and wechat or click "Register" to login with your email account.

#### 7. Connect and bind the Smart Watch Bracelet

When use the app to connect F3 Smart Watch Bracelet, please turn on the Bluetooth of the mobile phone and Smart Watch Bracelet. After log in the app, click "Bluetooth connection" → click "SEARCHING" → choose "F3" to bind the watch.

#### 8. Smart Watch Bracelet version updating

Smart Watch Bracelet and "FundoBracelet" App in a state of bluetooth connection. Click "solid upgrade" in "Me" interface, then you can update the software of the Smart Watch Bracelet.

#### 9. Functional description of the Fundo Bracelet app:

After successfully connect the watch with the mobile phone, you can check more functions in the app:

- ◎ Finding bracelet;
- ◎ Intelligent synchronization of the sports data on the watch and app;
- ◎ Intelligent synchronization of the altitude and barometric pressure data on the watch and app;
- ◎ Intelligent synchronization of the ultraviolet index on the watch and app;
- ◎ Intelligent synchronization of the mobile phone's time, date and alarm, and sedentary remind on the watch and app;
- ◎ Notification of incoming calls, short messages, QQ messages, WeChat, Facebook, messenger, WhatsApp, Twitter, Instagram and LinkedIn messages;
- ◎ Use the mobile phone to take photos by remote control;
- ◎ Watch with date memory function, 30 days health data saving;
- ◎ Share exercise data with friends via WeChat and QQ.

## 8

#### 10. Changing battery

When the low battery sign shows on the watch, suggest changing the battery in 15 days. Open the back cover with some tool. Remove old battery and install new battery. Note the polarity of the battery. Close back cover.

#### Notifications:

1. Support devices which with Bluetooth 4.0 and with the version of Android 4.3 or iOS 7.0 and above;
2. If log in failed, try different ways to logging in, such as QQ, wechat and Email account, at the same time please confirm whether network anomalies.
3. Bluetooth Connection:
  - A) Please make sure the bluetooth of mobile phone and the watch is turned on. If Bluetooth connection icon blinks, the watch's Bluetooth is turned on and is ready. If the icon is always on, Bluetooth connection is OK. If there is no bluetooth icon, bluetooth is turned off.
  - B) When searching Bluetooth, please make sure the watch has not been bind by another account;
  - C) When searching Bluetooth, please make sure the watch and mobile phone are nearby.
4. If the watch is not receiving message notification, please make sure the APP is logged in and message notification function is turned on;
5. If the exercise and sleep data are not synchronized to App, please try disconnect the Bluetooth and connect again through the App;
6. When Bluetooth connection abnormal and unable to enter the APP. Please try to enter into the Application Management of the Mobile phone and clear the cache data of the App.
7. If watches and cell phone bluetooth connection often disconnected automatically. Please check if the phone is equipped with a software which will clean up the background program and clean up the App by mistake. You need to "lock" the App in the phone, or unload the firmware to make sure the APP can stable running in the background.

## 9

#### Warranty

1. If it appears quality problems caused by manufacturing, materials, and design within one year (since the day of purchase), we will offer free warranty. Premise is using normally and correctly.
2. About the fault caused by the user personal reasons, we don't offer free warranty, as follows:
  - 1). Disassemble or refit the product.
  - 2). Caused by immodesty drop
  - 3). All artificial damage or misuse (such as: make water into the host, the external force shatter, scratch damage of peripheral components, etc.), all these are beyond the scope of the warranty.
3. When ask for free warranty, you must provide a warranty card with the seal of purchase place and purchase date.
4. If you met problems during use, please contact the shop customer service which you bought from.
5. Please make the final products as the standard.

Date of purchase:

IMEI code:

Buy store:

Customer signature:

Clerk Signature:

Shop stamp:

## 10