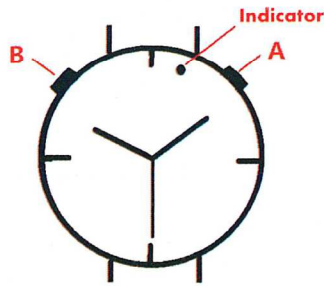


WIFI Camera Watch

Operation guide



A: Close/Open Button

B: Mode Button

- 1. Turn On/Turn Off:** Long press A to turn on, Blue light on and enter WIFI standby mode automatically, Long press A to turn off, the light off.
- 2. WIFI Mode:** Long press A, blue light flashing, after that Long time bright, enter to WIFI standby mode, and then enter the APP operation. In working status, Short press A key to close / open blue indicator light.
- 3. Watch Video:** The blue light long on state, short press B once, red light on, enter to the watch video standby, and then press the A once the red light flashing 3times to start video. In working status, short press B to pause / open video.
- 4. Open LED lighting:** In the Turn on state, long press the B the LED lights on, press the B again to close.
- 5. Charging status camera:** When the power is connected, the blue lights and green lights on, enter to the WIFI operation mode automatically. That will to above operations.
- 6. Charging indicator:** Connect power the green light on start charging, charging full the green light off.
- 7. Restore factory settings:** In the blue light on state, short press the B 2times, red and blue light on, and then press the A once, red and blue light flashing until to red off, blue light on, and complete restore factory settings.

一. APP software download




(Pic1 - Android Phone)



(Pic2 - iPhone)

Mode 1: Mobile phone users can scan two-dimensional code directly (Android system phone please scan "Pic1-Android Phone", Apple system phone please scan "Pic 2 - iPhone"), enter to download page.

Mode 2: Android system can be in the "Google play" search "9527" download and install monitoring software  "Plug&Play".

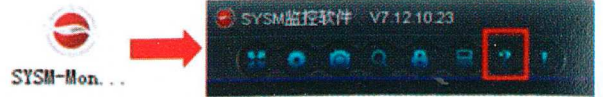
iPhone can be in the "App Store" search "9527" download

and install monitoring software  "p2pCamViewer".

Mode 3: Enter to web www.xyapp.com to download interface. According to the mobile operating system to download the corresponding viewing software and installation.

ATTN: On Compute, select PC version installation and operation of the watch, it have the detail of using the


method in CLIENT.



二. LAN Video Watch (Point to point P2P direct)

1. In the no network environment, open the device, using a mobile phone search device watches WiFi hot (Search the WiFi Hot need 20 seconds)

2. After the search, connect the watch WiFi. Open APP,

press  local watch. When the machine is in the boot state, the blue light on, and the mobile phone users to open the phone set in the "Wi-Fi" or "wireless network" --- to find the WIFI signal "xxxxx powe" --- click on the connection ---- After the connection is successful, open the mobile phone terminal

monitoring software  ---- View local device , Can see the picture.

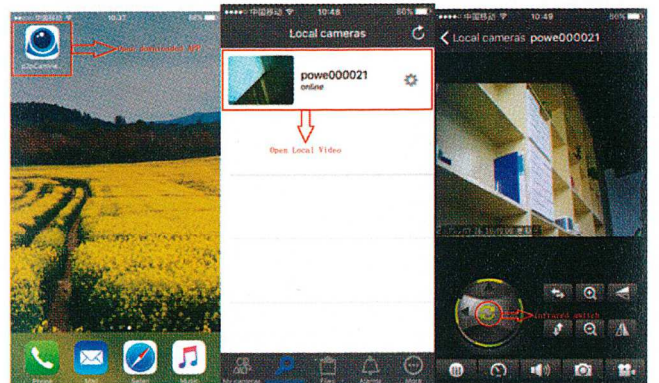
(Note: the name of this WIFI signal is same as the ID number of the camera, both the powe and the six digits. powe108888 For example: the camera ID number is POWE108888, the search to the WIFI hot signal is powe108888). As to the picture:

三. Mobile WI-FI camera local tutorial

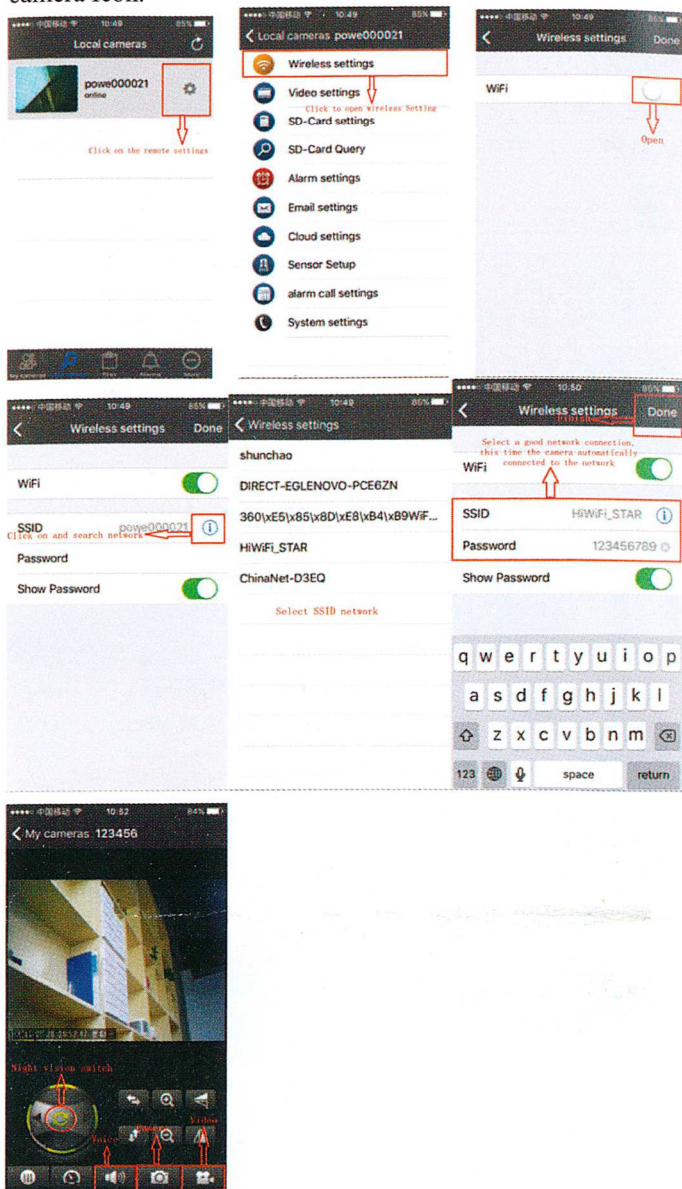
1. **Local use:** After the machine is opened, to open the phone Wi-Fi after about 20 seconds, search camera Wi-Fi hotspots and connect



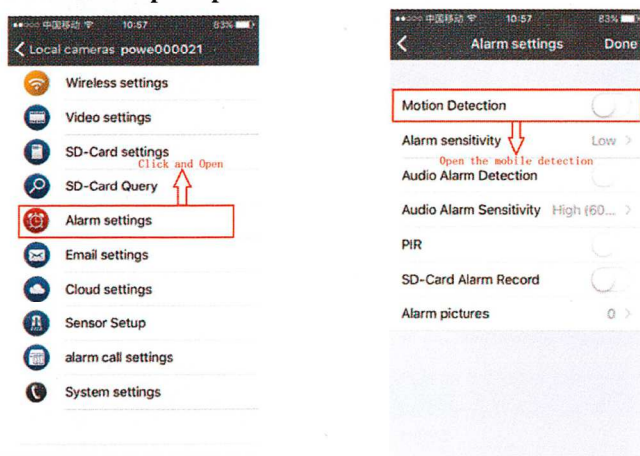
2. Open the installed APP software, click on the local view of remote video



3. Remote use: Set the distance, in the short list of options camera Icon.

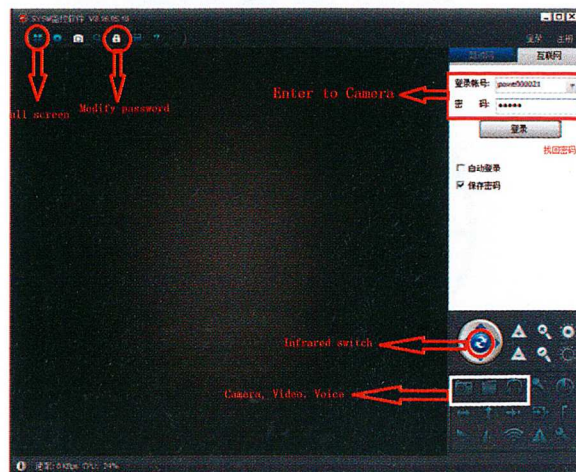


4. Motion detection Alarm function, APP running in the background, when monitoring moving objects will have information prompt.



Cam ID/User: powe001861
Login Password: 35696

5. Computer Operate



四. Detailed parameters

Picture Format	JPG
Resolution	1280*720P / 640*480P for choose
Video format	MP4
Frames	25
Visual angle	90 degrees
Motion detection camera distance	Straight line 6 meters
Minimum illumination	1LUX
Battery capacity	360mAH
Recording range	5m ²
Power waste	380MA/3.7V
Storage temperature	-20-80
Operating temperature	-10-48
Operating humidity	15-85%RH
Memory card type	TF卡
Memory card capacity maximum support	32GB
Play software	Operating system comes with or mainstream video player software
Computer operating system	Windows me/2000/xp/2003/vista; Mac os 10.4; Linux;
Mobile operating system	Android/iOS

Common problem:

fault	Processing method
Can't turn on	Battery without electricity, after charging and work
TF video can not play	Please install the PC client software, and work
Camera online can not open the video	Check whether the network is normal / restart the router
Not remote / remote not online	When set WIFI password to note that is incorrect, or that there are special characters
Connected to the hot spots on the WIFI and open APP can not see the device	Press to the top of the list of camera to refresh, or sign out APP and re-enter.