



## Downloading the App

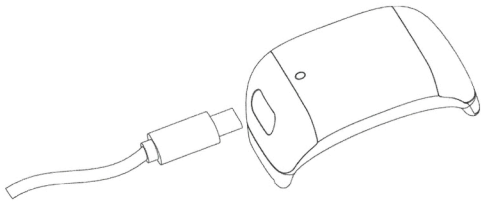
Scan the following QR code, download and install the App.



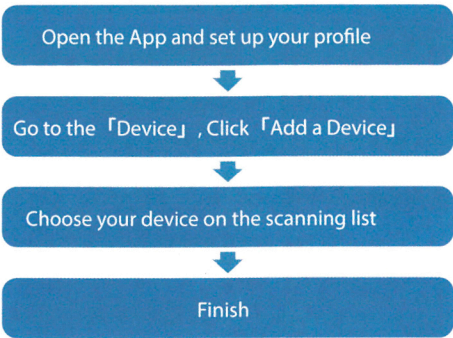
Scan QR Code and Download

## Charging and Active

Insert the charger into the charging port, connect the other end of the charger to the USB charging head orThe USB interface of the computer is OK.



## Pairing



Long press the 「time page」 on your device, go to the detail page. The MAC address on the detail page could help you identify your device on the scanning list.

## Smart Watch Features

WEATHER

09:28

28°

TMR:SUNNY 16-28°

Weather

It could show the weather info of current and tomorrow on the weather page.  
Weather info is synced after connecting with the APP, it will not be updated after a long disconnected.

MESSAGES

09:28

LONG PRESS TO ENTER

Messages Reminder

The device can sync incoming notifications from Twitter, Facebook, Whatsapp, Instagram etc.  
Recently 3 messages can be stored.  
Note: You can switch of/off the incoming notification in the APP.

## Smart Watch Features

SPORT

09:28

865KCAL

32896

3.25KM

Sports

Smart Watch automatically tracks Steps taken, Calories burned, Distance traveled and displays on the screen.  
NOTE: Your movement stats reset to zero at midnight.

SLEEP

09:28

4H:56M

6H:59M

2H:03M

Sleep

If you keep wearing Smart Watch in your sleep , it can provide the hours slept and quality of sleep stats on both the screen and the APP.  
NOTE: Sleep stats reset to zero at 8:00 pm.

## Smart Watch Features

SHUTTER

09:28

LONG PRESS TO TAKE A PICTURE

Remote Shutter

After connecting the device can remote contral the camera on your phone.

PLAYER

09:28

LONG PRESS TO ENTER

Music Play Contraller

After connecting the device can remote contral the music player on your phone.

## Smart Watch Features

MEASURE HR

09:28

208BPM

LONG PRESS TO MEASURE

Heart Rate Test

Long press the heart rate page to start measuring your heart rate.  
On the heart rate page, It can show the heart rate measured data of the last-7-times.

TRAINING

09:28

206BPM

0:56:23

865KCAL

Training

Long press on the training page to start a new training measure recording, there are 8 sport modes to be chosen.  
The last training recording will be shown on the training page.

## Smart Watch Features

OTHERS

09:28

LONG PRESS TO ENTER

Other Features

Other features include stopwatch, brightness adjustment, mute mode, factory reset, and power off.

02:39:45

Stop Watch

Long press on the stopwatch page to start timing, and long press again to stop timing.

## Smart Watch Features

MEASURE BP

09:28

65

138MMHG

LONG PRESS TO MEASURE

Blood Pressure Test

Long press on the blood pressure page to start measuring your blood pressure.  
On the blood pressure page, It can show the blood pressure measured data of the last-7-times.

MEASURE SpO2

09:28

98%

LONG PRESS TO MEASURE

SpO2 Test

Long press the SpO2 page to start measuring your SpO2.  
On the SpO2 page, It can show the SpO2 measured data of the last-7-times.

### Warranty card

Product name:	
Model:	
Name:	
Contact phone number:	
Address:	
Distribution company:	
Contact phone number:	
Address:	
Sales date:	

## Getting to Know Your Device

### 1.Using in Wet Conditions

Your device is water-resistant, which means it is rain-proof and splash-proof and can stand up to even the sweatiest workout.  
NOTE: Do not swim with your Smart Watch. We also don't recommend showering with your wristband; though the water won't hurt the device, wearing it 24/7 does not give your skin a chance to breathe. Whenever you get your bracelet wet, dry it thoroughly before putting it back on.

### 2.Using the Touch Button

Single tap the Touching Area under the main screen to wake up the device and switch to other functional pages.  
Long press the Touching Area to enter for more functions which is needed.

### 3.Using Quick View

With Quick View you can check the time or the message form your phone on your Smart Watch without taping. Just turn your wrist towards you and the time screen will appear for a few seconds.

## General Info & Specifications

### 1.Environmental Conditions

Operating temperature: 14 ℃ to 122 ℃ (-10 ℃ to 50 ℃)  
Non-operating temperature: -4 ℃ to 140 ℃ (-20 ℃ to 60 ℃)

### 2.Size

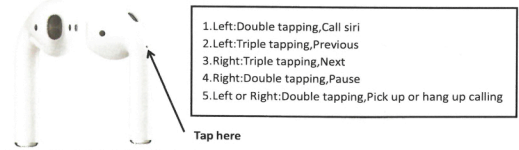
Fits a wrist between 5.5 and 7.7 inches in circumference.

### 3.Disposal and Recycling

Please kindly be aware that it is the consumer's responsibility to properly dispose and recycle Smart Watch and accompanying components. Do not dispose of Smart Watch with common household waste, the Smart Watch unit is considered electronic waste and should be disposed of at your local electronic equipment collection facility.  
For more information, please contact your local electronic equipment waste management authority or the retailer where you bought the product.

## Headset manual

Control same as original  
Attention:it's tapping not touching



### Common problems and solutions

#### 1.No headphones connected

Take out the headset, put the headset close to the phone (about 5cm, not too far away), turn on the Bluetooth of the phone, find "Airpods" and click connect, if the surrounding battery interference is too large, it will affect the Bluetooth connection.

#### 2.Take out the headset, the sound will not pause, or often pause in the ear to interrupt

This is because when the earphones were put into the ears not deep enough, the light sensor of the earphones did not start. If you put the earphones into your ears and go deeper, this problem can be solved.

#### 3. The connection is stuck, delayed or broken

Due to the properties of Bluetooth straight: unstable and easy to interfere with WIFI, Bluetooth headset may occasionally be stuck, delayed or broken, just reconnect

#### 4. No sound from a single headset

A. The earphone may not be placed in the charging compartment, please put it tightly again.

The earphones may be out of power. Put the earphones into the charging compartment and ensure that they are placed close to charge for a while to solve the problem.

## Certificate of approval

Inspector: \_\_\_\_\_

Date of production: \_\_\_\_\_