



## 【 smart watch 】

Instruction manual

### 【Adaptation platform and requirements】

- ◆ 1.Android 4.4 and above
- ◆ 2. iOS 8.5 and above
- ◆ 3. Support Bluetooth 5.1 and above

### 【Product details】



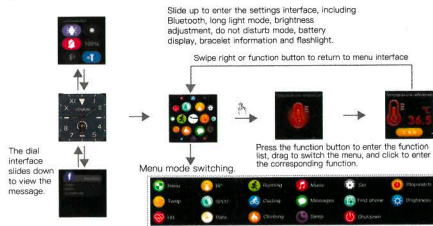
### 【Introduction of the function】

1. Time: Time, date, remaining power are shown on the watch face. (Once smart band connected to the device, time will be synchronized with device time. The time cannot be set on the smart band).
2. Heart Rate function interface: Click into measure your current heart rate on the heart rate interface, the result will be shown afterward. More details and data are recorded and synced in the APP.
3. Blood pressure function interface: Click into measure your current blood pressure on the blood pressure interface, the result will be shown afterward. More details and data are recorded and synced in the APP.
4. Blood pressure function interface: Click into measure your current blood pressure on the blood pressure interface, the result will be shown afterward. More details and data are recorded and synced in the APP.
5. Body temperature detection: Click to start measuring the current body temperature. After the measurement is successful, the measurement result is displayed and can be viewed in the APP simultaneously.
6. Immunity test: Click to start measuring the current immunity situation. After the measurement is successful, the measurement result is displayed and can be viewed in the APP simultaneously.
7. Running mode: Click to enter, start/pause, record exercise time and generate calories.
8. Cycling mode: Click to enter, start/pause, record exercise time and generate calories.
9. Mountain climbing mode: Click to enter, start/pause, record exercise time and generate calories.
10. Status interface: Record the time of exercise, the number of kilometers and the number of calories burned on the day.
11. Stopwatch: Click to enter the stopwatch function, you can start/pause/end operation, right slide to exit.
12. Sleep interface: The bracelet records and displays the total length of your sleep, as well as the length of your deep sleep and light sleep. More detailed data analysis can be viewed in the app simultaneously.
13. Shut down: Click to enter to close the bracelet.
14. Music control: after connecting with device, smart bracelet is able to control the music player. Press and hold to enter the music control panel, to play/pause, previous song, and next song.
15. Message interface: Turn on notification on APP, notification will be shown on smart bracelet whenever APP notification, incoming, messages are received.
16. Find the phone: When the bracelet is connected to the app, click to go to find the phone, and the phone will ring later.
17. Setting: including Bluetooth, long light mode, brightness adjustment, do not disturb mode, device information, power display, flashlight.
18. Other features: charging reminder, sedentary reminder, call reminder, alarm reminder, shake photo, upgrade reminder, screen saver, connection reminder.



Turn on the constant light mode. After SS is not operated, the dial is switched to the constant light dial.

### 【USE】



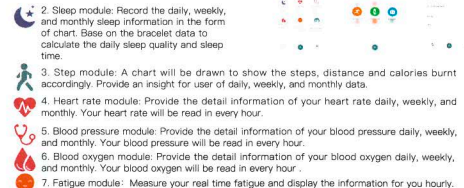
### 【APP connection method】



1. Scan the QR code above to download or search "Wearfit 2.0" in Android store or APP store to download and install.
  2. Press and hold the touch button for 3 seconds to turn it on, open and enter the "WearFit2.0" app, search for the device according to the APP connection wizard, select the device model, and complete the connection pairing.
- Tips: For iOS devices, please press pair the Bluetooth for the first time connecting. Afterward, the bracelet will be able to receive the income calls, texts and more notifications pushed from the iOS.

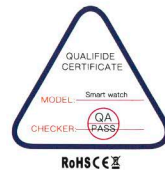
### 【Wearfit 2.0 introduction】

1. Home page, additional functions, personal information



### 【Basic parameters】

Screen size	1.3 inch
Bluetooth	Bluetooth5.1
Waterproof level	IP67
Type of battery	Lithium polymer battery
Battery capacity	170mAh
Charging time	2 Hours
bracelet size	41mm*34.5mm*10.5mm
Charging	Magnetic charging, Voltage 5V
Touch screen	Full screen touch
Package	Smart bracelet+Magnetic charger+instruction manual



### 【Remark】

- 1.If there is a product quality problem or the use of products is not clear, please contact our store by direct mail, we will deal with it quickly.
- 2.The measurement results of this product are for reference only, not for any medical purpose and basis. Please follow the doctor's instructions and do not rely on the measurement results for self diagnosis and treatment.
- 3.The waterproof grade is IP67, which can be used for daily life waterproof. But the bracelet can not be used for diving and put under water for long time. In addition, this product does not prevent hot water, because steam will affect the bracelet.
- 4.Our company reserves the right to modify the contents of this manual without notification. Some functions are different in the various software version, which is normal.
- 5.Caution Do not use a power adapter that outputs more than 5V=1A to charge, otherwise the circuit may be burned out and the battery will not be charged.

**Faults and defects caused by humidity will not be covered by the warranty.**